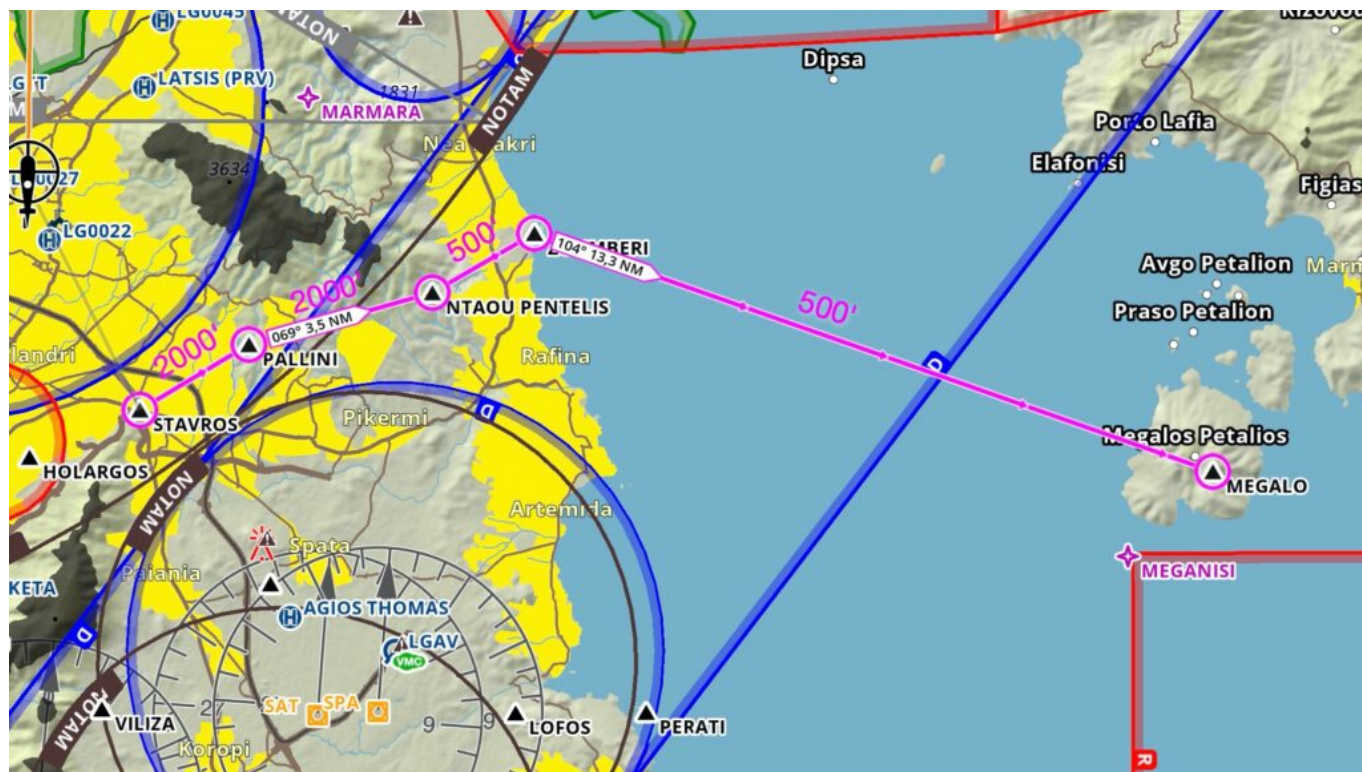


A2043/22 NOTAM - NEW VFR ROUTE AVBL FOR HEL USE AND CONSULTATION BY PILOTS IS TENTATIVELY ESTABLISHED

Date published: 1 July, 2022



Q) LGGG/PKCS/V /NBO / A /000/999/3756N02357E

A) LGAV

B) 2022-07-01 10:25 C) PERM

E) NEW VFR ROUTE AVBL FOR HEL USE AND CONSULTATION BY PILOTS IS TENTATIVELY ESTABLISHED AS FLW:

STAVROS - PALLINI - NTAOU PENTELIS - ZOUMBERI - MEGALO

FOR ROUTE PART STAVROS-NTAOU PENTELIS HEL SHOULD REMAIN 2000FT ALT WHILE FOR ROUTE PART NTAOU PENTELIS-ZOUMBERI-MEGALO SHOULD REMAIN 500FT ALT.

COORD OF REP AS FLW:

STAVROS: 380039N 0235039E.

PALLINI: 380152N 0235313E.

NTAOU PENTELIS: 380250N 0235732E.

ZOUMBERI: 380356N 0235956E.

A2043/22 NOTAM - NEW VFR ROUTE AVBL FOR HEL USE AND CONSULTATION BY PILOTS IS TENTATIVELY ESTABLISHED

Date published: 1 July, 2022

MEGALO: 375931N 0241553E.

REF AIP GREECE AD 2-LGAV-VFR.